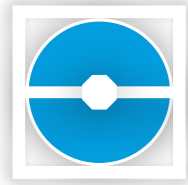


Rotary Heat Exchanger

Plugged Aluminium Profile
Housing **RRC**

KLINGEENBURG



Recognised International Standard Plugged Aluminium Profile Housing **RRC**

Enlargement of our product range of rotary heat exchangers: Plugged corners housing

As an extension to our existing rotor housings RRT, RRS and RRU, the RRC is now available.

The new RRC is a light weight box section aluminium framework with knock together or "Plugged" corners on the basis of the most modern manufacturing methods.

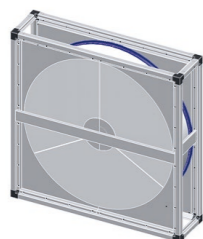
This offers the familiar Klingenburg quality and flexibility.

Features:

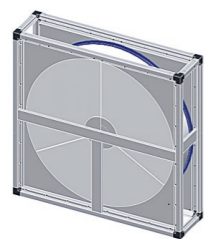
- Can be combined with all rotor wheel types
- Plugged Aluminium Profile Housing from full box section profiles with screwed plastic corner joints
- Cladding panels from galvanised steel, galvanised steel with aluminium zink or aluminium
- With or without side panels or doors
- Housing dimensions from 1250 mm to 3000 mm
- Center profile beam is 80mm for all sizes
- Produced in undivided execution
- Service friendly circumferential seals accessible from the side
- Depth: 1250mm-2075mm: 330mm with 40mm housing profiles
2076mm-3000mm: 370mm with 60mm housing profiles
- Can be installed as cassette type or flanged type unit

Optionally:

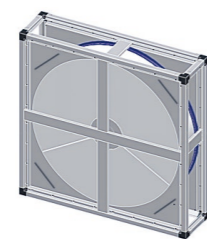
- Isolation up to 60 mm
- Upstream corner service hatch possible
- Corner connectors and fixing brackets for flanged types are also available



RRC 1250



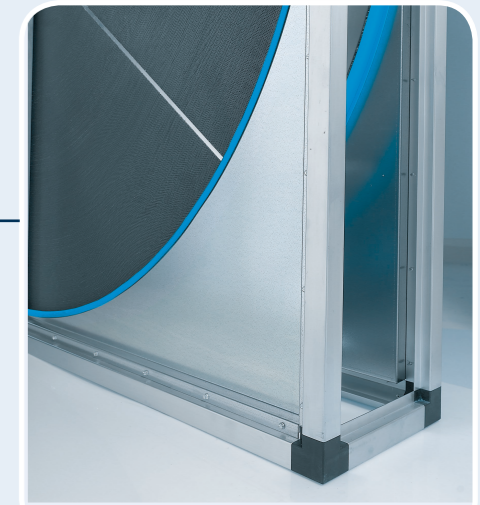
RRC 1251 - 1919



RRC 1920 - 3000



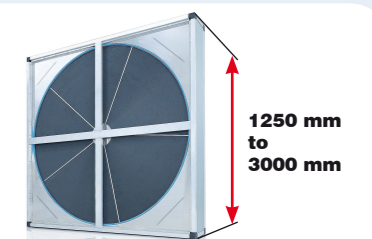
Stability: Undivided Plugged Aluminium Profile Housing from full box section profiles with screwed plastic corner joints



Choice: Cladding panels from galvanised steel, galvanised steel with aluminium zink or aluminium



Service friendly: Circumferential seals accessible from the side



Sizes: Different housing sizes available from 1250 mm to 3000 mm

About us

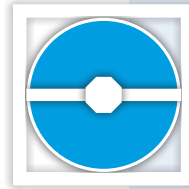
KLINGENBURG

Components for air handling systems - for 3 decades - worldwide:

We are a resourceful company engaged in the production and sales of energy recovery and humidity control products for ventilation systems for more than 30 years.

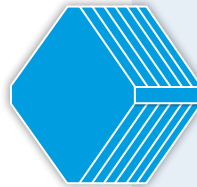
Our highly innovative products make significant contributions toward saving energy resources and reducing CO₂ emissions.

Klingenburg's high quality and the technological edge of our products are well known throughout the world on the air-conditioning technology market.



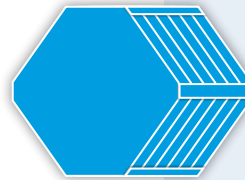
Rotary Heat Exchanger

- Execution as aluminum, epoxy, enthalpy or sorption rotor
- High Temperature Rotor made of stainless steel



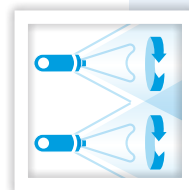
Crossflow-Plate Heat Exchanger

- Aluminium, epoxy and stainless steel versions available



Counterflow-Plate Heat Exchanger

- Aluminium and epoxy versions available
- Highest efficiency



Humidifier

- Hygienic humidification
- Adiabatic cooling

Klingenburg GmbH
Boystrasse 115
D-45968 Gladbeck / Germany

Phone: +49-(0) 20 43-96 36 0
Fax: +49-(0) 20 43-7 23 62
E-mail: klingenburg@klingenburg.de
www.klingenburg.de